

Chairs update

EGNRET-35

Tokyo, Japan

October 12-15, 2010

Cary Bloyd

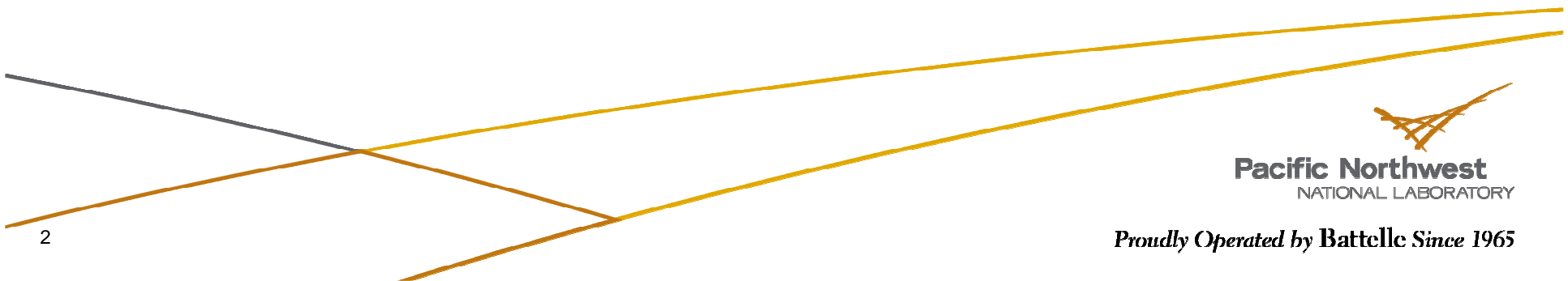


Pacific Northwest
NATIONAL LABORATORY

Proudly Operated by Battelle Since 1965

The EWG has not met since EGNRET 34

- ▶ EWG 40 to be held in Brunei-Darussalam November 22-26, 2010



Pacific Northwest
NATIONAL LABORATORY

Proudly Operated by Battelle Since 1965

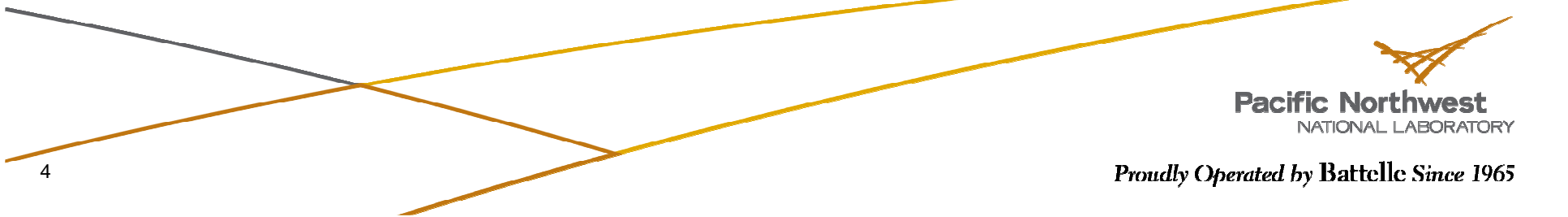
EMM9 was held June 19-20, 2010 in Fukui, Japan

Theme: Low Carbon Paths to Energy Security – Cooperative Solutions for a Sustainable APEC

- ▶ The EMM9 website has been finalized at:
<http://www.enecho.meti.go.jp/english/report/index.html>



Proudly Operated by Battelle Since 1965

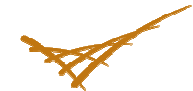


Pacific Northwest
NATIONAL LABORATORY

Proudly Operated by Battelle Since 1965

EMM9 Instructions from Ministers

- ▶ Energy Security: We instruct the EWG and BTF to continue assessing the **resource potential for biofuels** to displace petroleum-based fuels, the relative costs of biofuels, sustainable development practices for biofuels and strategies for expanding biofuels infrastructure, in cooperation with the Automotive Dialogue and the Transportation Working Group (TWG).
- ▶ Energy Efficiency: We instruct the EWG to conduct a series of workshops on the potential **fuel and carbon savings from electrification of the transport sector, energy efficient freight, transit-oriented development and other energy efficient transport strategies**, in cooperation with the TWG.



Pacific Northwest
NATIONAL LABORATORY

Proudly Operated by Battelle Since 1965

EMM9 Instructions from Ministers: Clean Energy Supply (1)

- ▶ We instruct the EWG to explore mechanisms to encourage economies to set **individual goals and action plans for introducing low-emission power sources**, building upon the success of the PREE, with assistance from APERC and relevant technology expert groups.
- ▶ We instruct the EWG to continue its **assessment of renewable energy options** for reducing carbon emissions, spurring investment and creating new jobs, in cooperation with EGNRET and the Small and Medium Enterprises (SME) Working Group.
- ▶ We instruct the EWG to start an **APEC Smart Grid Initiative (ASGI)** to evaluate the potential of smart grids to support the integration of intermittent renewable energies and energy management approaches in buildings and industry.

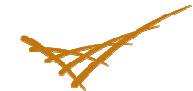


Pacific Northwest
NATIONAL LABORATORY

Proudly Operated by Battelle Since 1965

EMM9 Instructions from Ministers: Clean Energy Supply (2)

- ▶ We instruct the EWG to develop **APEC Technology Development Roadmaps** for key energy technologies in cooperation with the IEA, the Major Economies Forum (MEF) and others that accelerate collective efforts to deploy such technologies.
- ▶ We instruct the EWG to establish a Task Force to implement an **APEC Low-Carbon Model Town Project**. The Low-Carbon Model Town Task Force should develop the concept of a Low Carbon Town, conduct feasibility studies to encourage creation of low-carbon communities in urban development plans, and share best practices for making such communities a reality.



Pacific Northwest
NATIONAL LABORATORY

Proudly Operated by Battelle Since 1965