

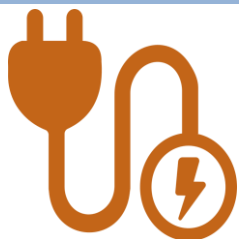
54<sup>th</sup> Expert Group on New and Renewable Energy Technologies Meeting  
10-11 November 2020 via Webex

# Impact of COVID-19 in RE Development: PHILIPPINES

Director Mylene C. Capongcol  
Renewable Energy Management Bureau  
**DEPARTMENT OF ENERGY**



# 2019 Power Demand and Supply Snapshot



**Peak Demand**  
15,581 MW

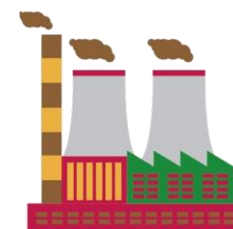


**Capacity**  
Installed - 25,531 MW  
Dependable - 22,736 MW  
Available - 16,606 MW

**Electricity Sales and Consumption**  
106,041 GWh



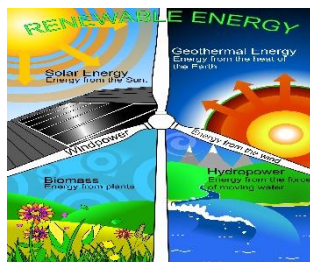
**Newly Operational Installed Capacity**  
1,674 MW



**Gross Generation**  
106,041 GWh



**Power Project Capacity**  
Committed - 5,767 MW  
Indicative - 42,815 MW



**RE Share**

**Capacity Mix**

29.4%

**Generation Mix**

20.8%

**HH Electrification Level**



**92.96%**  
(December 2019)



# Impacts of COVID-19 Pandemic..

-

**Disruption in the Economy  
and Education Sector**

**Social Stress and Uneasy  
Adjustment under the New  
Normal**

**Fiscal Strain on National  
and Local Government**

**Altered Energy Supply and  
Demand**



+

**New Business Practices  
and Models**

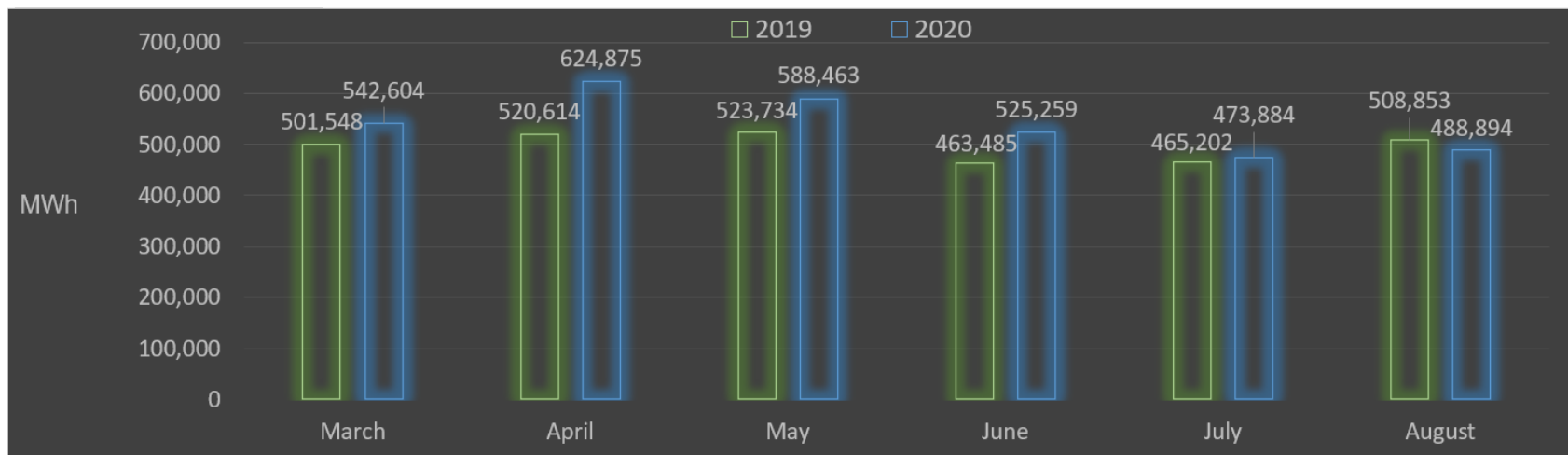
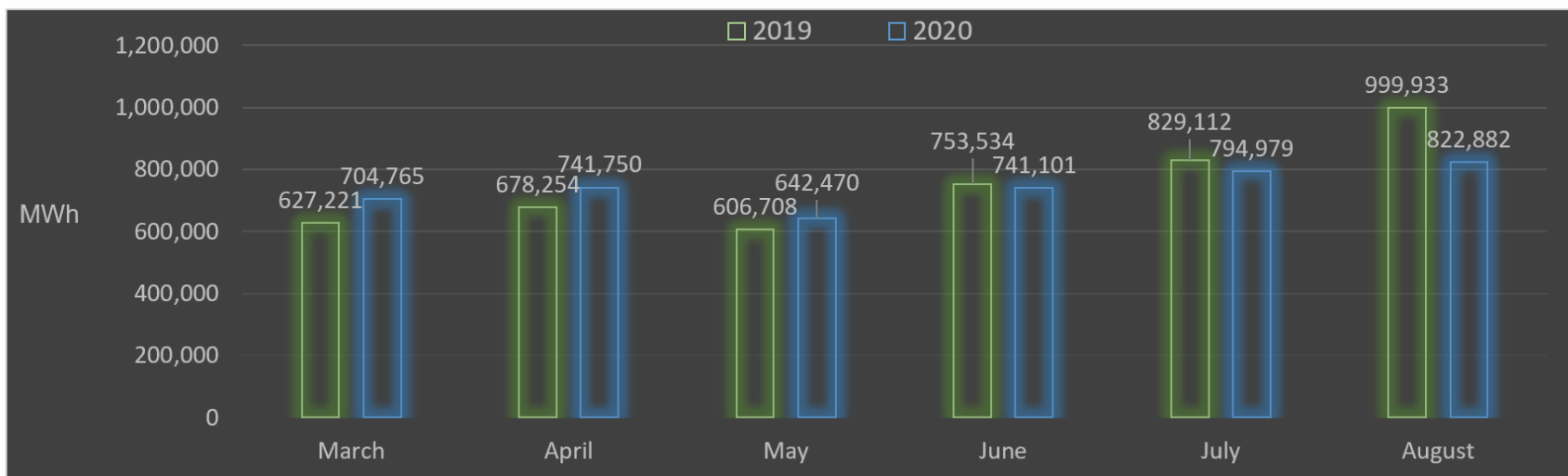
**New Lifestyle and Culture  
of Caring under the New  
Normal**

**Fiscal Diligence**

**Renewable Energy  
Opportunities**



# Performance of RE Facilities



**Actual RE Generation (MWh): March to August 2019 vs March to August 2020**



# Energy Sector Response ...

**Recognized Energy Workers as Essential Workers /Front Liners in the fight against Covid-19**

**Allowed the use of ER 1-94 fund previously dedicated to environment, livelihood and electrification projects to be used for LGU projects to manage the pandemic**

**Encouraged RE Project Developers to accommodate displaced workers under the “Balik Probinsiya” (Back to the Province) Program and maximize hiring of local labor to help decongest urban areas**



Photos courtesy of EPIMB. Thank You!





# Energy Sector Response ...



**Accelerated the campaign for investment in the RE Sector, e.g. Geothermal Energy Development / Moratorium in Coal-Fired Power Projects**

**Sustained Implementation of RE Market Policy Mechanisms**

- **Renewable Portfolio Standards**
- **Green Energy Option Program**
- **Green Energy Auction Program**
- **Enhanced Net Metering for RE**

**Promote Productive Use of Renewable Applications (PURE). e.g. food preservation, Solar PV systems in health centers, food security, education and livelihood opportunities.**

Photos courtesy of EPIMB. Thank You!



# Energy Sector Response ...



**NPC**

- **Php 4.165 Billion** remitted to BTr
- **20 volunteers** in mega swabbing centers



**NEA**

- **Php 1.35 Billion** remitted to BTr
- Discontinued programs amounting to **Php 295 Million** for COVID-19 relief
- **9 Circulars** issued
- **3 volunteers** in mega swabbing centers



**PNOC**

- **Php 5.0 Billion** remitted to BTr
- **Php 5 Million** allocated for health, safety & food aid projects
- Donated **surgical masks, food packs, bread and sacks of rice** to front liners and hospitals



**PSALM**

- **Php 4.0 Million** royalty shares disbursed
- **185 patients** housed in Bagac property (171 were discharged)



**PNOC EC**

- **Php 2.0 Billion** remitted to BTr
- Donated **thermal scanners, face masks, goggles and gloves** to Phil. Army



**TransCO**

- **Php 7.5 Million** donated to Lung Center of the Philippines
- **42 front liners** being housed in property and provided with daily food packs
- Donated **PPEs, vitamins, alcohol and face masks** to hospitals

# RE Market Development Support Mechanisms

## 1. GENERATION

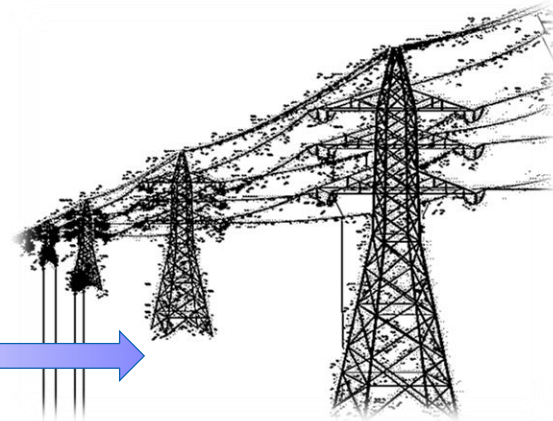


Feed-In-Tariff (FIT)  
System

Renewable Portfolio  
Standards (RPS) / Green  
Energy Auction Policy  
(GEAP)

Bilateral Contracting

## 2. TRANSMISSION



## 4. RETAIL/SUPPLY



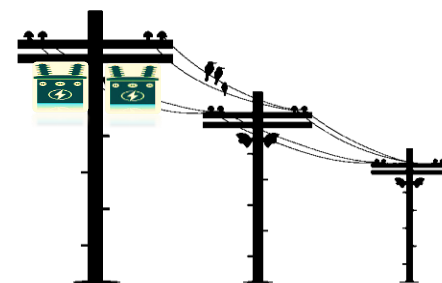
  
Distributed  
Energy  
Resource  
System

Net Metering

Green Energy  
Option Program  
(GEOP)

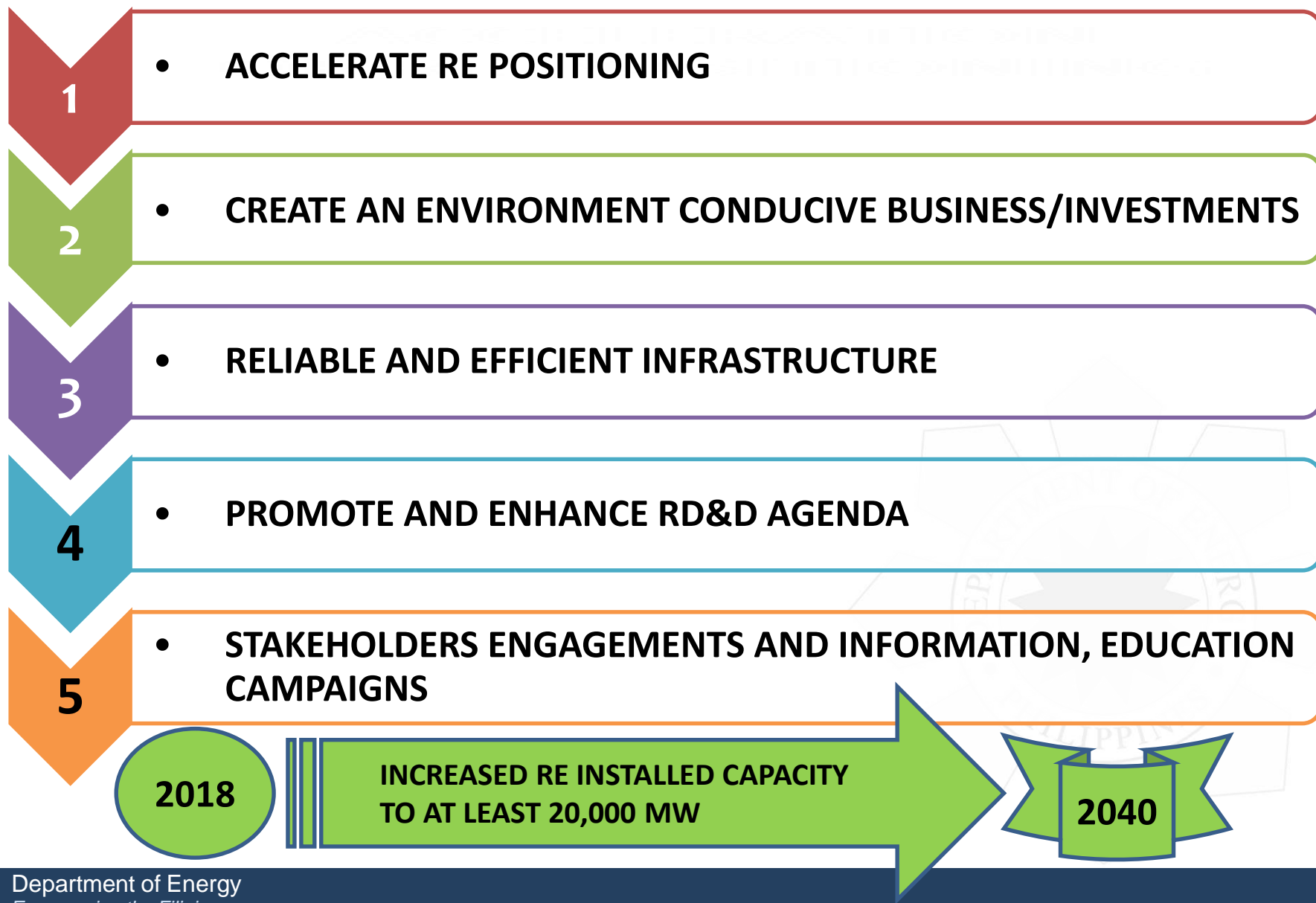
Own-Use Scheme

## 3. DISTRIBUTION



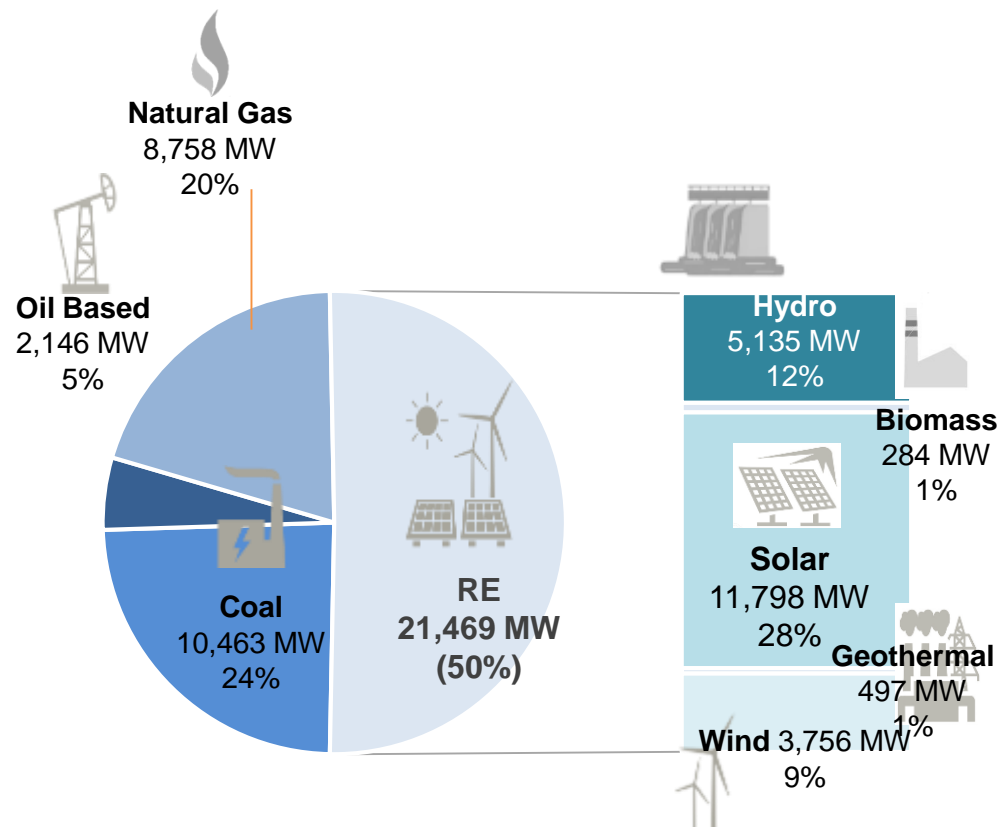
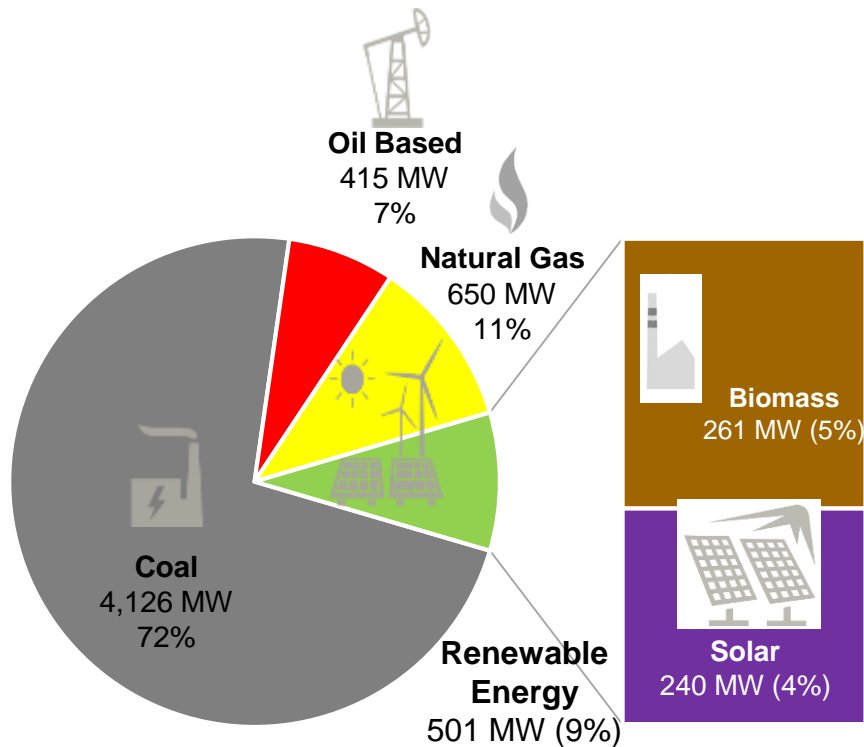


# Way Forward: RE Sectoral Roadmap



# Committed and Indicative Power Projects (as of December 2019)

**TOTAL COMMITTED  
CAPACITY = 5,691 MW**

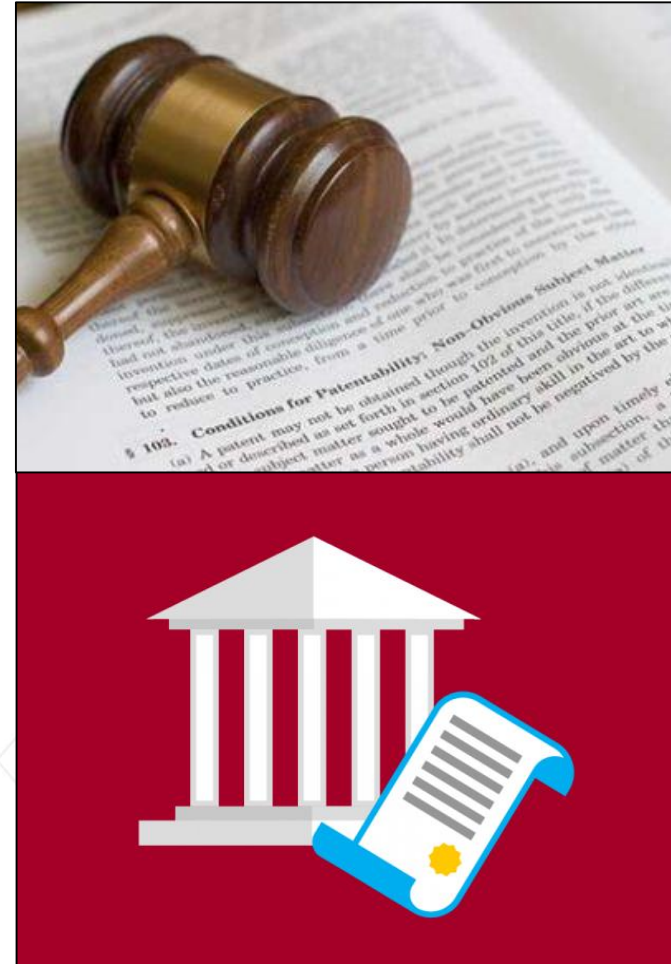


**TOTAL INDICATIVE  
CAPACITY = 42,837 MW**



# Enabling Policies and Laws for Investors

- ❑ **Executive Order No. 30** Creating the Energy Investment Coordinating Council in order to Streamline the Regulatory Procedures affecting Energy Projects
- ❑ **Republic Act No. 11032** Ease of Doing Business Act of 2018
- ❑ **DC2019-10-0013** Omnibus Guidelines Governing the Award and Administration of RE and the Registration of RE Developers
- ❑ **Republic Act No. 11234** Energy Virtual One-Stop Shop (EVOSS) Act
  - Department Circular No. DC2019-05-0007 (Implementing Rules and Regulations)



# Updates on Renewable Energy Policies and Investments

## Thank You!



(+632) 479-2900



[www.doe.gov.ph](http://www.doe.gov.ph)



[//doe.gov.ph](https://www.facebook.com/doe.gov.ph)



[@doe\\_ph](https://twitter.com/doe_ph)

